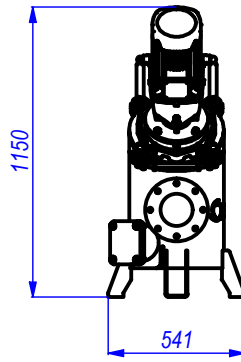
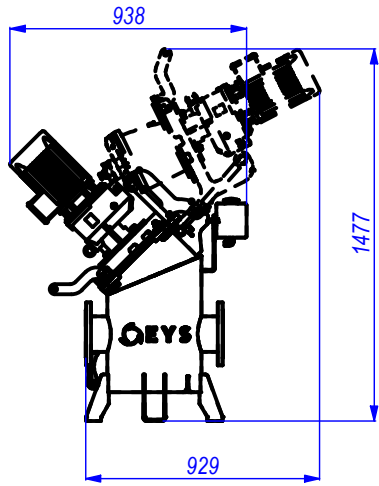


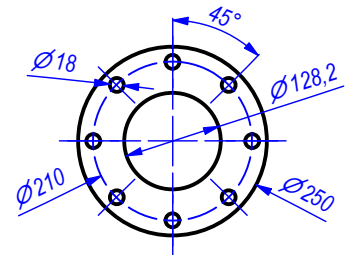
REV. NO	DESCRIPTION	DATE	APPROVAL	Edges of workpieces DIN 6784	GENERAL DIMENSION TOLERANCES (DIN ISO 2768)								
					NOMINAL DIMENSION	>0.5	>3	>6	>30	>120	>400	>1000	>2000
						3	6	30	120	400	1000	2000	4000
					TOL. (MIDDLE)	±0.1	±0.1	±0.2	±0.3	±0.5	±0.8	±1.2	±2

INLINE MACERATOR 3 RIGHT SIDE ( 1 : 30 )

INLINE MACERATOR 3 FRONT SIDE ( 1 : 30 )

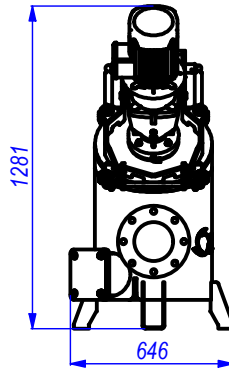
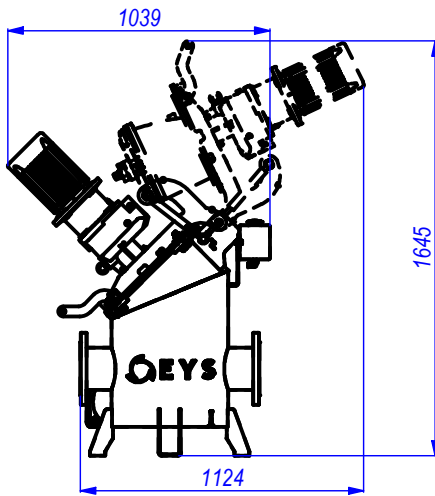


IM3 INLET AND OUTLET DN125 FLANGE DIMENSIONS ( 1 / 10 )

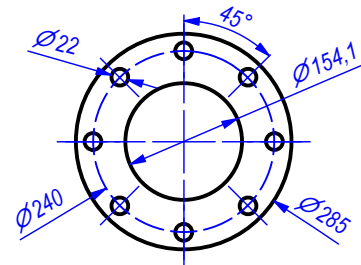


INLINE MACERATOR 5 RIGHT SIDE ( 1 : 30 )

INLINE MACERATOR 5 FRONT SIDE ( 1 : 30 )

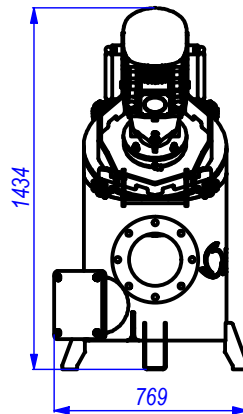
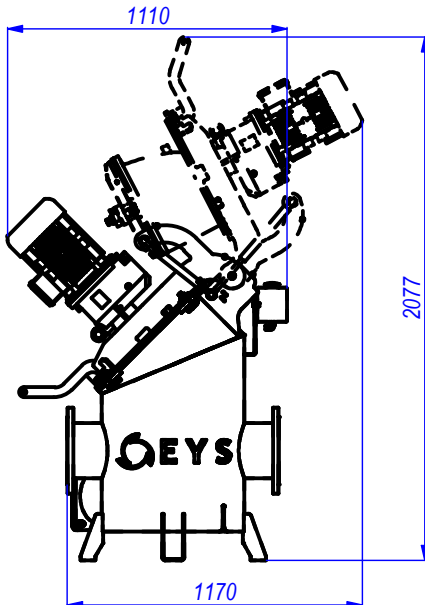


IM5 INLET AND OUTLET DN150 FLANGE DIMENSIONS ( 1 / 10 )

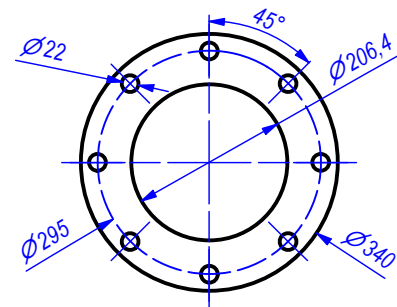


INLINE MACERATOR 10 RIGHT SIDE ( 1 : 30 )

INLINE MACERATOR 10 FRONT SIDE ( 1 : 30 )



IM10 INLET AND OUTLET DN200 FLANGE DIMENSIONS ( 1 / 10 )



Unless specified otherwise all tolerance are ± 0,1mm

	DESCRIPTION:			REVISION NO	00	
				REVISION DATE	21.06.2021	
	MATERIAL			THIS REVISED	M.E.ÖZTÜRK	
MACHINE NAME	IM3-IM5-IM10	WEIGHT	177,885 kg	NAME	SIGN	
MACHINE CODE	MW1011-MW1012-MW1013	UNIT		DRAWING	M.E.ÖZTÜRK	
PART NAME	IM3-IM5-IM10	SCALE	1 : 30	CONTROL	S. AKBULUT	
PART CODE	MW1011-MW1012-MW1013	SIZE	A4	APPROVAL	U. KOSE	